

OTB-588N Series

High-Power Thru-Panel Terminal Block

Pitch: 35mm

600 Volts / 250 Amps

PART#:

OTB-588N

Type:

High-Power Thru-Panel

Features:

Thru-Panel Barrier Construction
Optional Clear Plastic Cover

Applications:

Suitable for:
Electrical Switch Gear
Off Highway Vehicles

Electrical

Rated Voltage:
600V

Rated Current:
250A

Wire Size:

4/0 Stranded CU

Operating Temperature:

-40C to +90C

Materials

Housing:
Polycarbonate (UL94V-0)
Standard Color: Black

Cover:

Polycarbonate (UL94V-0)

Terminal:

Copper, Nickel-Plated

Positions Available:

1-12

Bolt Size:

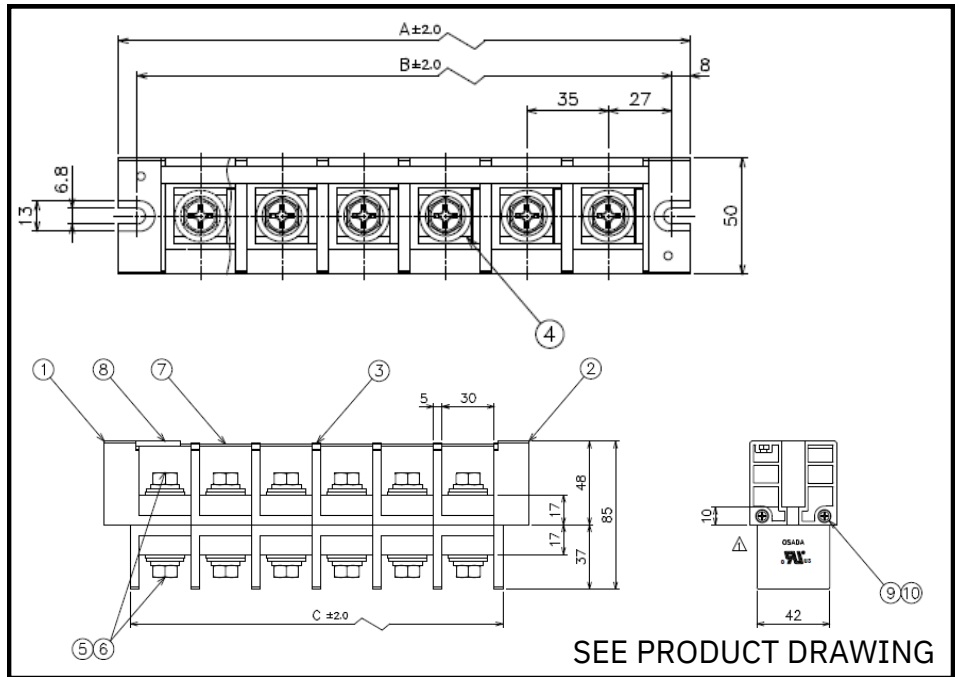
M10, Steel Cr3+

Withstanding Voltage:

AC2500V

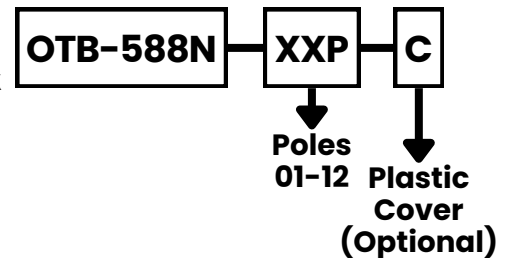
Torque:

30 lbs. per inch



The OTB-588N Series are high-power, thru-panel terminal blocks available in 1-12 positions. They offer a clear, protective cover to reduce shock hazard, and each terminal has a hex head screw with lock washer for convenient field wiring. Suitable for industrial controls, electrical switch gear or any high-power application.

HOW TO ORDER:



P	1	2	3	4	5	6	7	8	9	10	11	12
A	70	105	140	175	210	245	280	315	350	385	420	455
B	54	89	124	159	194	229	264	299	334	369	404	439
C	40	75	110	145	180	215	250	285	320	355	390	425



World Class Terminal Blocks

1400 Howard Street
Elk Grove Village, IL60007

Phone: (847) 956-1680
Fax: (847) 956-1690

Sales@BlockMaster.com
www.BlockMaster.com