

# CONNECTOR BLOCK 250 VOLTS / 25 AMP

## **PART #:**

**HP-T3048A**

## **Type:**

Panel Mount

## **Features:**

2, 4 & 6 Poles

## **Applications:**

Suitable for:

Panels

HVAC Equipment

## **Electrical**

### **Rated Voltage:**

250V

### **Rated Current:**

25A

### **Screw Size / Torque**

**Line** M 3.5 x 7 (Stainless Steel 304)

12 – 24 AWG 8 LB/IN

**Load** M 3.5 x 7 (Stainless Steel 304)

12 - 24 AWG 8 LB/IN

### **Operating Temperature:**

-20°C to +60°C

## **Materials**

### **Housing:**

PA66 (UL 94V-0)

### **Terminals:**

Current Conducting Plate – Brass Ni Plated

Spring Plate - Stainless Steel

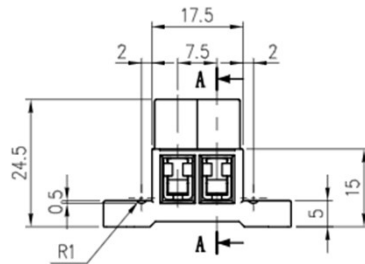
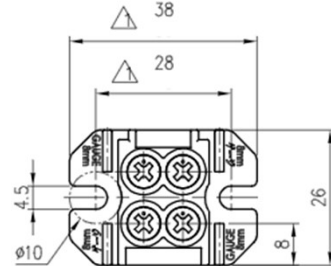
Cage Cold Rolled Steel, Zinc, Chromate

### **Dielectric Strength:**

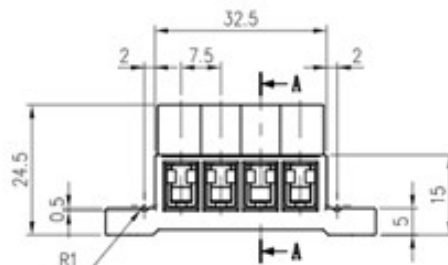
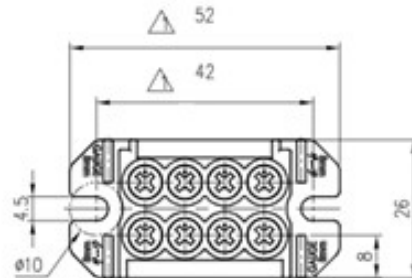
AC 2,500V / 1 Minute



This product is especially suited for HVAC and other similar control voltage applications. Smaller gauge wire clamps as well as the terminal block size allow the user to fit many connections in a small space. **Parts may be factory laser marked or custom labeled by user.**



**HP-T3048A-3-2P (2-Poles)**



**HP-T3048A-3-4P (4-Poles)**

See Reverse for HP-T3048A-3-6P

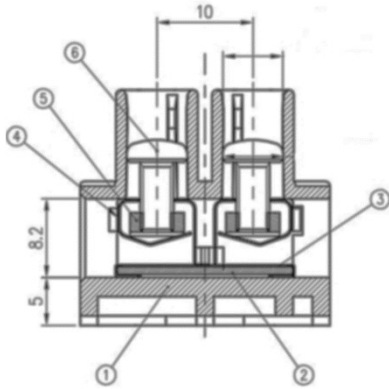


1400 Howard Street Phone: (847) 956-1680  
Elk Grove Village, IL 60007 Fax: (847) 956-1690

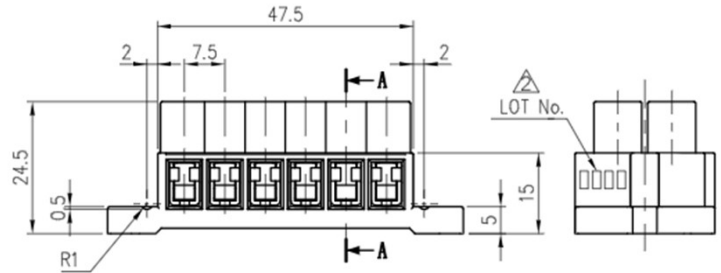
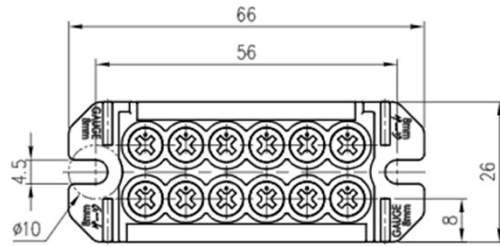
[www.BlockMaster.com](http://www.BlockMaster.com)



**World Class Terminal Blocks**



Typical Cross Section on All Models



HP-T3048A-3-6P (6-Poles)

### DETAILED SPECIFICATION

RoHS	Compliant
Rating	250V / 25A
Contact Resistance	Under 2m $\Omega$
Temperature Rise	Under 45K
Dielectric Strength	AC2500V Per 1 Minute Plus
Insulation Resistance	Resist Over 100M $\Omega$ DC500V
Ambient Temperature	-20 $^{\circ}$ ~ +60 $^{\circ}$
Storage Temperature	-25 $^{\circ}$ ~ +70 $^{\circ}$
Ambient Humidity	0 ~ 95% RH (Max)
Length of Stripped Wire	7 $\pm$ 1mm Typical

Standard Part Numbers
Available
T3048A-3-2P
T3048A-3-4P
T3048A-3-6P



Isometric Exploded View